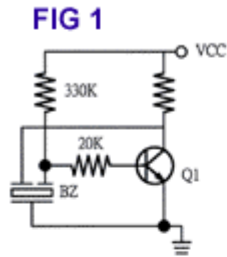
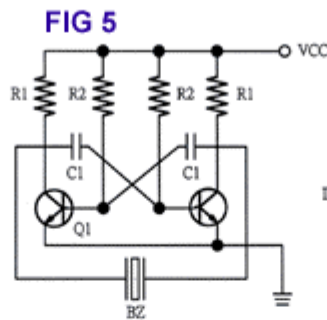


蜂鸣器驱动推荐电路

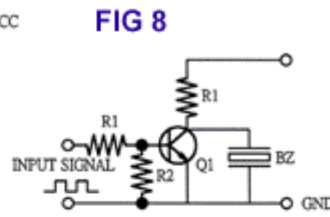
RECOMMENDED CIRCUITS



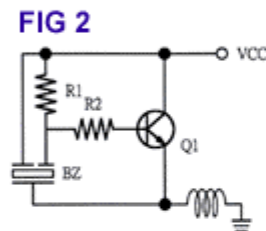
Self-Oscillation Circuit  
(Tr Type)



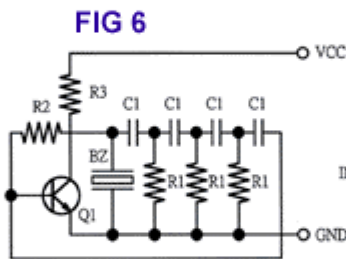
Multi-Vibrator Type



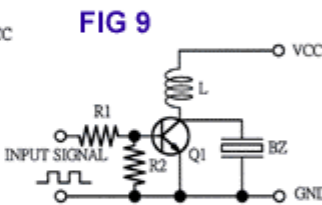
Load Resistance Type



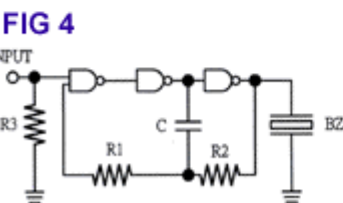
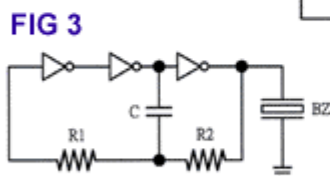
Self-Oscillation Circuit  
(Tr Type)



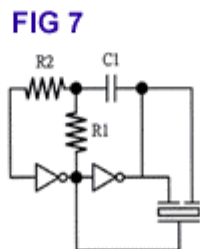
Phase-Shifter Type



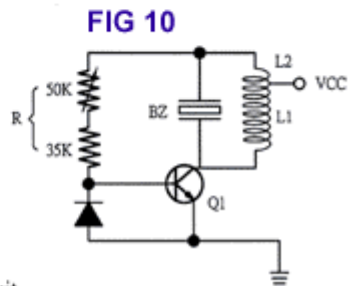
Load Resistance Type



IC Oscillation Circuit



Self-Oscillation Circuit  
(IC Type)



Blocking Oscillation Type